

FTDX101 CAT & SPLITTER MULTI SOFT CONFIG VSPE - OMNIRIG - WLOG2000 - WSJT – MSHV - ...

(however it also works with all other transceivers)

by HB9oab Franco hb9oab@amsat.org
www.wlog2000.com

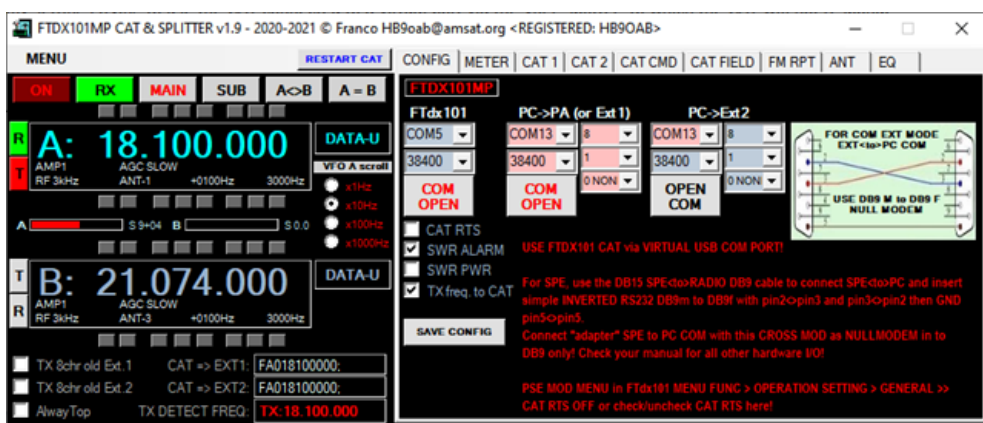
I use the VSPE64bit and OMNIRIG at same time for all software.

NOTE:

I apologize for the not always correct language, I use an automatic translator as many asked me to translate all texts for them as they were not able to translate a PDF by themselves ...

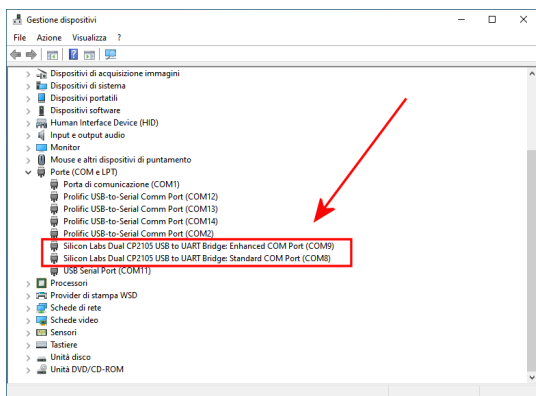
... ☺ If necessary Google will give you all the necessary instructions ...

Here the printscreen for my best OMNIRIG VSPE config...

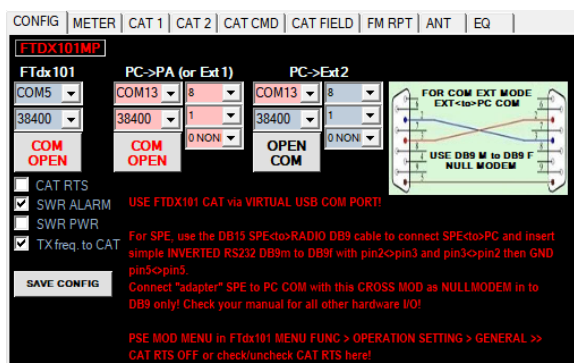


FTDX101 from original UART CAT COM9 at COM5 on VSPE

UART COM9 Enhanced => for FTDx101 full CAT
UART COM8 Standard => for FTDx101 PTT CW FSK

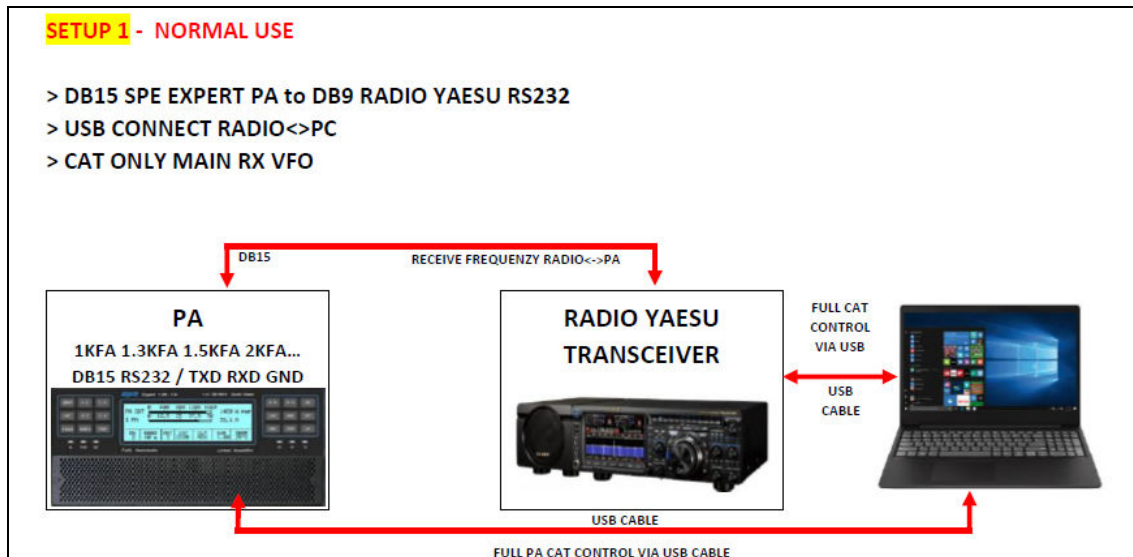


And PC COM13 direct from PC to EXPERT SPE as TX freq to CAT only cabled at 3x wired cable with pin2-3 inverted + pin5 GND



NULLMODEM only for PC com => to EXT1 EXT2 HARDWARE

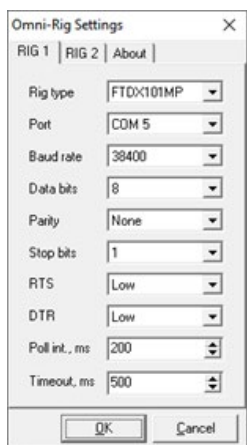
EXEMPLE:



With the FTDX101 CAT & SPLITTER is possible to send TX frequency to 2x (EXT1/EXT2) hardware

OMNIRIG SETTING for FTDX101

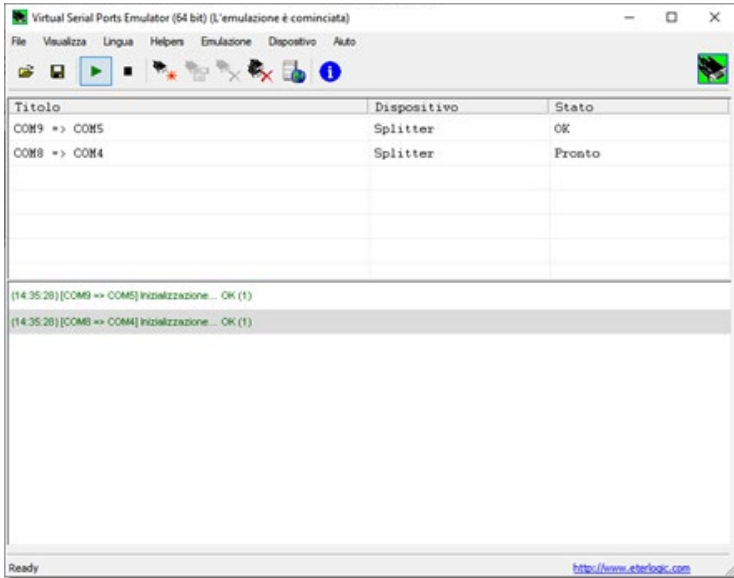
Install also OMNIRIG 1.20 and config RIGs



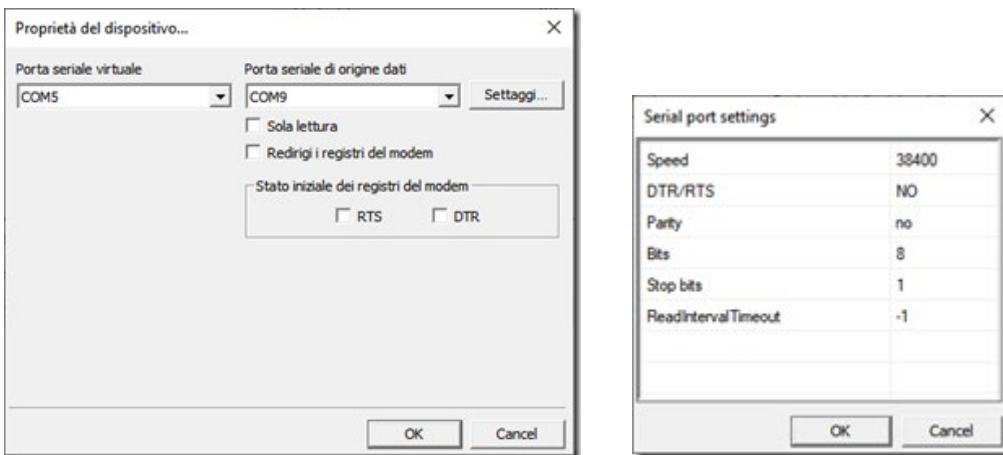
OMNIRIG direct to VSPE 64bit SPLITTER VIRTUAL COM5

VSPE 64bit CONFIG

UART original COM9 to SPLITTER COM5 this is for CAT
UART original COM8 to SPLITTER COM4 this is for CW PTT FSK

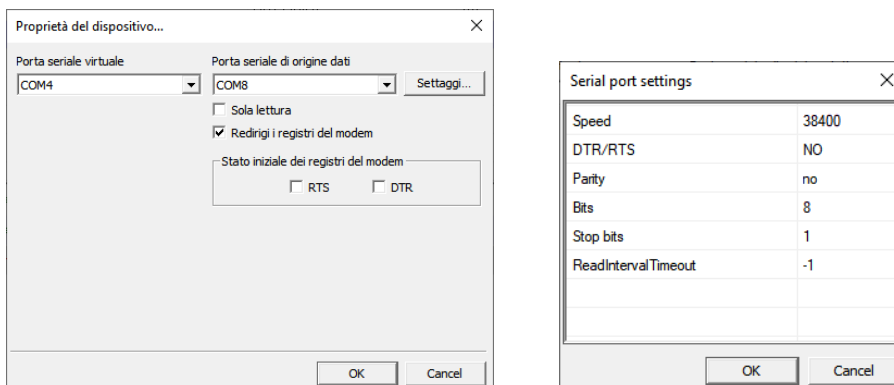


VSPE COM5 => COM9 CONFIG



VSPE 64bit to SPLITTER COM9 original USB UART COM to COM5 virtual config VSPE 64bit

Then COM8 to COM4 SPLITTER for PTT CW FSK



If you use CAT SOFTWARE, within the limits of the computer or the soft and the various configurations, it is possible to call simultaneously COM5 for CAT and COM4 for PTT CW FSK with all software.

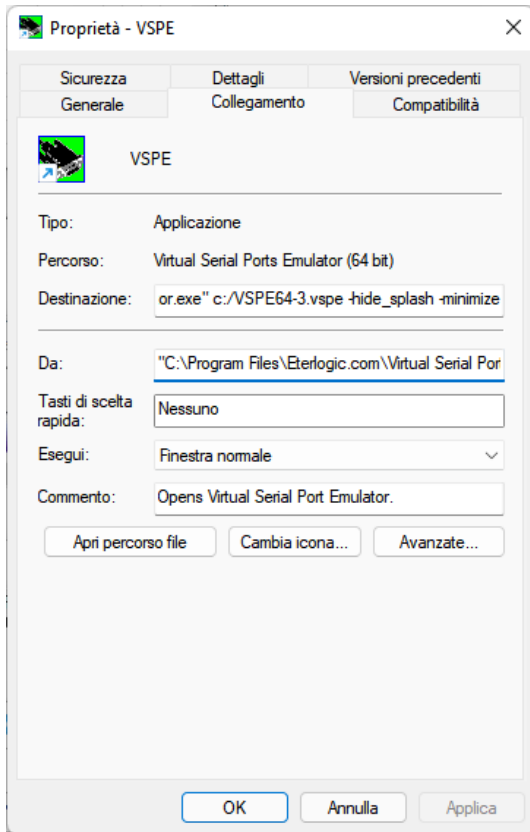
Also if the software has limited CAT options and has the OMNIRIG rig selection you can use this option in the radio setup <OMNIRIG>.

There may be limits and incompatibilities both between PC and COM and software, but trying and finding an optimal solution is always a good satisfaction in seeing everything work together.

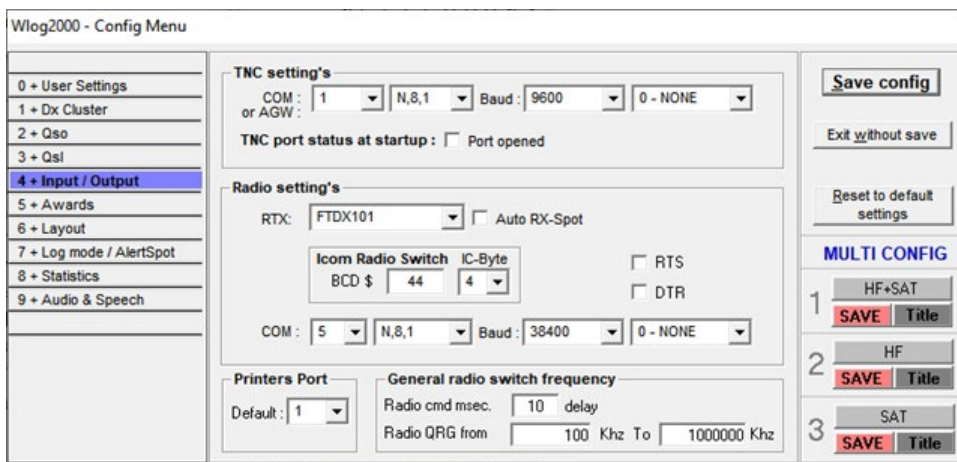
Personally I have tested some slowdowns of the various applications: when FTDX101 CAT & SPLITTER is always reactive and immediate, other applications I have tried often suffer considerable delays and the transit limits of CAT commands: for example, to use the FT8 in SPLIT mode which occasionally loses synchronization and goes out of frequency, but we know that several ft8 softwares have compatibility limitations with virtual com ports.

Then with startup file in autostart:

"C:\Program Files\Eterlogic.com\Virtual Serial Ports Emulator (64 bit)\VSPEmulator.exe" c:/VSPE64-3.vspe -hide_splash -minimize



Then the WLOG2000 at www.wlog2000.com CONFIG



Here WLOG2000 com port config setup

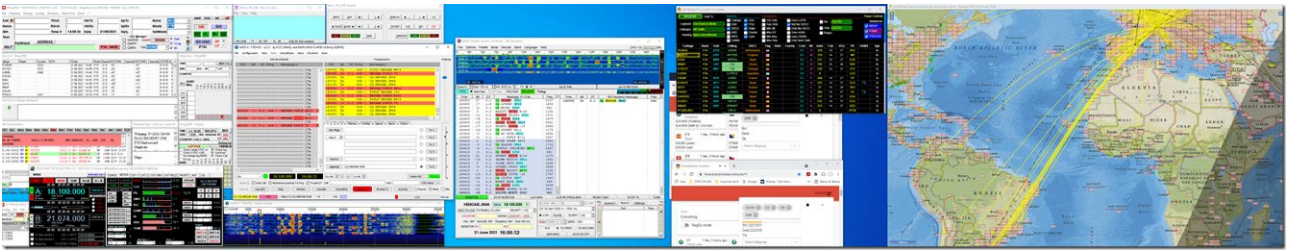


Figure: simple exemple using multi user + multi COM + multi soft... all via OMNIRIG and VSPE:

1. OMNIRIG installed
2. VSPE 64bit installed
3. My WLOG2000 (www.wlog2000.com) to FTDX101 tx to COM5 for DXCLUSTER "frequency click"
4. WSJT to OMNIRIG port 1 in 17m
5. MSHV to OMNIRIG port 1 in 17m for monitoring
6. FTDX101CAT&SPLITTER to COM5 for RADIO CAT
7. GRID TRACKER from/to all soft

all without problem...

I know that unfortunately with some software are problems that the VSPE does not always accepted 100%, but using OMNIRIG you can do something better than as you see here everything works 24h/7/365 ...

Afterwards there may be some conflicts but in general you should remember to also put the CAT RTS OFF on the radio menu.

I hope to be of help

73

Franco hb9oab@amsat.org
www.wlog2000.com